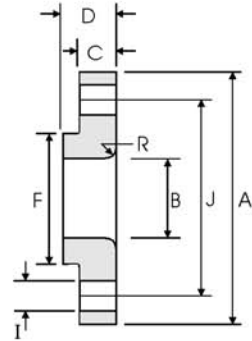




Lap Joint Flanges - ANSI B16.5



Class 300 lb

Pipe	Flange Data					Lap	Hub	Drilling Data			Weight
Nominal Pipe Size		A	B	C	D	R	F	H	I	J	
	Outside Diameter	Overall Diameter	Inside Diameter	Flange Thickness min	Overall Length	Lap Radius	Hub Diameter	Number of Holes	Bolt Hole Diameter	Diameter of Circle of Holes	kg/ piece
	in mm	in mm	in mm	in mm	in mm	in mm	in mm		in mm	in mm	
1/2	0.840 21.30	3.750 95.20	0.900 22.90	0.560 14.20	0.880 22.30	0.120 3.000	1.500 38.10	4	0.620 15.70	2.620 66.55	0.62
3/4	1.050 26.70	4.620 117.3	1.110 28.20	0.620 15.70	1.000 25.40	0.120 3.000	1.880 47.70	4	0.750 19.00	3.250 82.50	1.10
1	1.315 33.40	4.880 123.9	1.380 35.10	0.690 17.50	1.060 26.90	0.120 3.000	2.120 53.80	4	0.750 19.0	3.500 88.90	1.33
1 1/4	1.660 42.20	5.250 133.3	1.720 43.70	0.750 19.00	1.060 26.90	0.190 4.800	2.500 63.50	4	0.750 19.00	3.880 98.50	1.65
1 1/2	1.900 48.30	6.120 155.4	1.970 50.00	0.810 20.60	1.190 30.20	0.250 6.400	2.750 69.85	4	0.880 22.30	4.500 114.3	2.44
2	2.375 60.30	6.500 165.1	2.460 62.50	0.880 22.30	1.310 33.20	0.310 7.900	3.310 84.00	8	0.750 19.10	5.000 127.0	2.83
2 1/2	2.875 73.00	7.500 190.5	2.970 75.40	1.000 25.40	1.500 38.10	0.310 7.900	3.940 100.0	8	0.880 22.30	5.880 149.3	4.25
3	3.500 88.90	8.250 209.5	3.600 91.40	1.120 28.40	1.690 42.90	0.380 9.700	4.620 117.3	8	0.880 22.30	6.620 168.1	5.78
3 1/2	4.000 101.6	9.000 228.6	4.100 104.1	1.190 30.20	1.750 44.40	0.380 9.700	5.250 133.3	8	0.880 22.30	7.250 184.1	7.27
4	4.500 114.3	10.00 254.0	4.600 116.8	1.250 31.70	1.880 47.70	0.440 11.20	5.750 146.0	8	0.880 22.30	7.880 200.1	9.55
5	5.563 141.3	11.00 279.4	5.690 114.5	1.380 35.00	2.000 50.80	0.440 11.20	7.000 177.8	8	0.880 22.30	9.250 234.9	12.2
6	6.625 168.3	12.50 317.5	6.750 171.5	1.440 36.50	2.060 52.30	0.500 12.70	8.120 206.2	12	0.880 22.30	10.62 269.7	15.5
8	8.625 219.1	15.00 381.0	8.750 222.3	1.620 41.10	2.440 61.90	0.500 12.70	10.25 260.3	12	1.000 25.40	13.00 330.2	24.1
10	10.75 273.0	17.50 444.5	10.92 277.4	1.880 47.70	3.750 95.20	0.500 12.70	12.62 320.5	16	1.120 28.40	15.25 387.3	34.4
12	12.75 323.8	20.50 520.7	12.92 328.2	2.000 50.80	4.000 101.6	0.500 12.70	14.75 374.6	16	1.250 31.70	17.75 450.8	50.4
14	14.00 355.6	23.00 584.2	14.18 360.2	2.120 53.80	4.380 111.2	0.500 12.70	16.75 425.4	20	1.250 31.70	20.25 514.3	70.9
16	16.00 406.4	25.50 647.7	16.19 411.2	2.250 57.15	4.750 120.6	0.500 12.70	19.00 482.6	20	1.380 35.00	22.50 571.5	89.5
18	18.00 457.2	28.00 711.2	18.20 462.3	2.380 60.45	5.120 130.0	0.500 12.70	21.00 533.4	24	1.380 35.00	24.75 628.6	111
20	20.00 508.0	30.50 774.7	20.25 514.4	2.500 63.50	5.500 139.7	0.500 12.70	23.12 587.2	24	1.380 35.0	27.00 685.8	137
24	24.00 609.6	36.00 914.4	24.25 616.0	2.750 69.8	6.000 152.4	0.500 12.70	27.62 701.5	24	1.620 41.10	32.00 812.8	204

Notes

- Weights are based on manufacturer's data and are approximate.